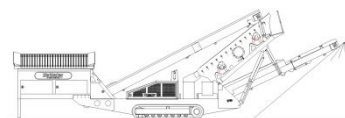


SPECIFICATIONS



McCloskey ***S130***



DESCRIPTION

Heavy duty mobile screener with following features:

- 14x5 heavy duty high energy 2 bearing screenbox.
- 100Hp Cat engine.
- Track or wheel mobile.
- Integrated hydraulic folding stockpiling conveyors.
- Remote control tipping grid.
- Fast on site setup time – 10 minutes.

DIMENSIONS AND WEIGHTS

Length - transport	15.09m (49' - 6")
Width - transport	2.90m (9' - 6")
Height - transport 2 deck track	3.40m (11' - 2")
Height - transport 2 deck wheel	3.68m (12' - 1")
Weight - 2 deck track	27,200 Kgs (59,965 lbs)
Weight - 2 deck wheel	23,000 Kgs (50,706 lbs) - estimated

CAPACITIES

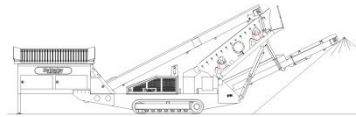
Diesel tank capacity	399 L (105 US gal)
Hydraulic tank capacity	630 L (166 US gal)
Capacity - 12ft hopper	8.01 m ³ (10.48 yd ³)

FEED CONVEYOR

Belt width	1200mm (48")
Belt spec	Plain 500/3 6+3
Drive drum dia.	335mm (13.1")
Tail drum dia.	320mm (12.5")
Gearbox	Bonfig 805 W2
Gearbox ratio	24.2
Gearbox torque	7000Nm cont, 12500Nm max
Motor	Danfoss OMSS160
Flow rate	50.6 Lpm (13.4 US gpm)
Adjustable speed	YES
Maximum speed	13.1 rpm

MAIN CONVEYOR

Belt width	1050mm (42")
Belt spec	Plain 400/3 6+1.5
Drive drum dia.	285mm (11.2")
Tail drum dia.	270mm (10.6")
Motor	Danfoss OMV630
Flow rate	72.6 Lpm (19.2 US gpm)
Adjustable speed	OPTION
Maximum speed	115.2 rpm

**TAIL CONVEYOR**

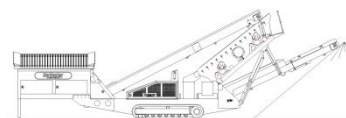
Stockpile height - track model	3871mm (12' - 8")
Stockpile height - wheel model	4139mm (13' - 7")
Belt width	1200mm (48")
Belt spec	Plain - 400/2 6+1.5
Drive drum dia.	285mm (11.2")
Tail drum dia.	270mm (10.6")
Motor	Danfoss OMT630
Flow rate	72.6 Lpm (19.2 US gpm)
Maximum speed	115.2 rpm

SIDE CONVEYOR

Stockpile height - track model	4600mm (15' - 1")
Stockpile height - wheel model	4870mm (15' - 11")
Belt width	650mm (26")
Belt spec	Chevron - 400/3 6+1.5
Drive drum dia.	285mm (11.2")
Tail drum dia.	270mm (10.6")
Motor	OMT400
Flow rate	50.6 Lpm (13.4 US gpm)
Adjustable speed	YES
Maximum speed	126.5 rpm

SCREENBOX

Dimensions - top deck	4270mm x 1524mm (14' x 5')
Dimensions - bottom deck	3660mm x 1524mm (12' x 5')
Bearing type 2 Deck	NSK/RHP 22319 - 95mm bore
Screens - top deck	5' x 4' side tension - 3 off & 5' x 2' side tension - 1 off
Screens - bottom deck	5' x 6' end tension - 2 off
Tensioning - top deck	Quick release pin and wedge
Tensioning - bottom deck	Curved tension bar and adjuster
Screen angle	25 to 38 deg
Screen motor	DBH MCC2208 (58.9cc/rev)
Drive system	Direct drive with HRC180 coupling
Hydraulic flowrate	72.6 Lpm (19.2 US gpm)
Speed adjustable	YES - Pressure compensated FCV
Screen stroke adjustable	6 - 10mm maximum
Screen shaft speed	1130 - 950 rpm
Screen 'g' force	4.29 - 5.05

**POWERUNIT AND HYDRAULICS**

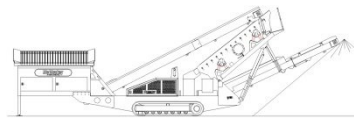
Engine	CAT 3054 C DIT (Tier II)
Engine power	100 HP
Engine speed	2200 rpm
Flywheel Pump 1	DBH 5033,5033
LH PTO Pump 2	DBH 5023,5023
RH PTO Pump 3	DBH 2SPA11
Total system flow	289 L (76.3 US Gpm)
Hydraulic tank capacity	630 L (166 US Gals)
Hydraulic tank ratio	2.18 : 1
Hydraulic Oil cooler	YES

ELECTRICS

Emergency stops	6 off, 1 feeder, 2 powerunit RH&LH, 2 chassis front RH&LH, 1 Walkway
Chassis cabling	Armored cable
Start Siren	YES - 10 sec delay
Engine shutdowns:	Low oil pressure High water temp Air filter blockage (selectable) Fuel contamination Low hydraulic tank level
Engine room light	YES
Remote tipping grid	YES - 2 function timed
Radio control tracks	optional - Hetronic system
Pendant track control	YES - plugged in at feeder end

TRACKS

Width	500mm (19.7")
Length	2920mm (9' - 7") crs
Height	739mm (29.4")
Gearbox	Bonfiglioli 707
Ratio	122:1
Motor	Rexroth 63
Speed max	1.32 Kph (0.82 Mph)
Flow rate	72.6 Lpm (19.2 US gpm)
Dual speed	TBC
Attachment to chassis	Bolt On for quick change

**WHEELS**

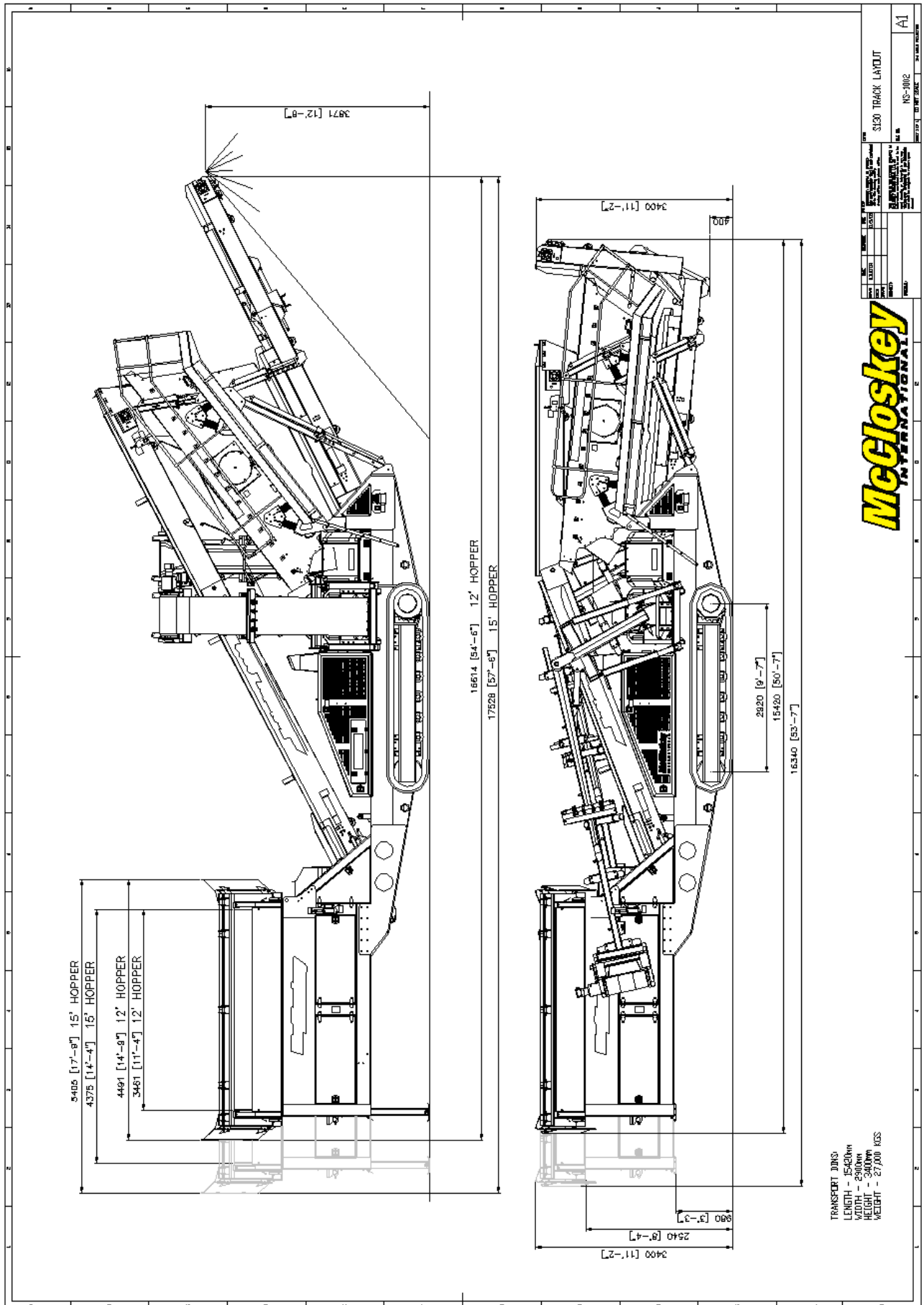
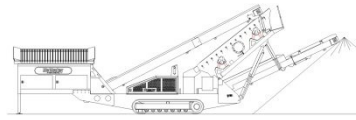
Width	2900mm (9' - 6")
Axle centers	1360mm (4' - 6")
Wheels	235/75/R17.5 dual
Axles	2 off
Brakes	YES
Spring suspension	YES
Mudguards	YES
Handbrake	OPTION
ABS	OPTION

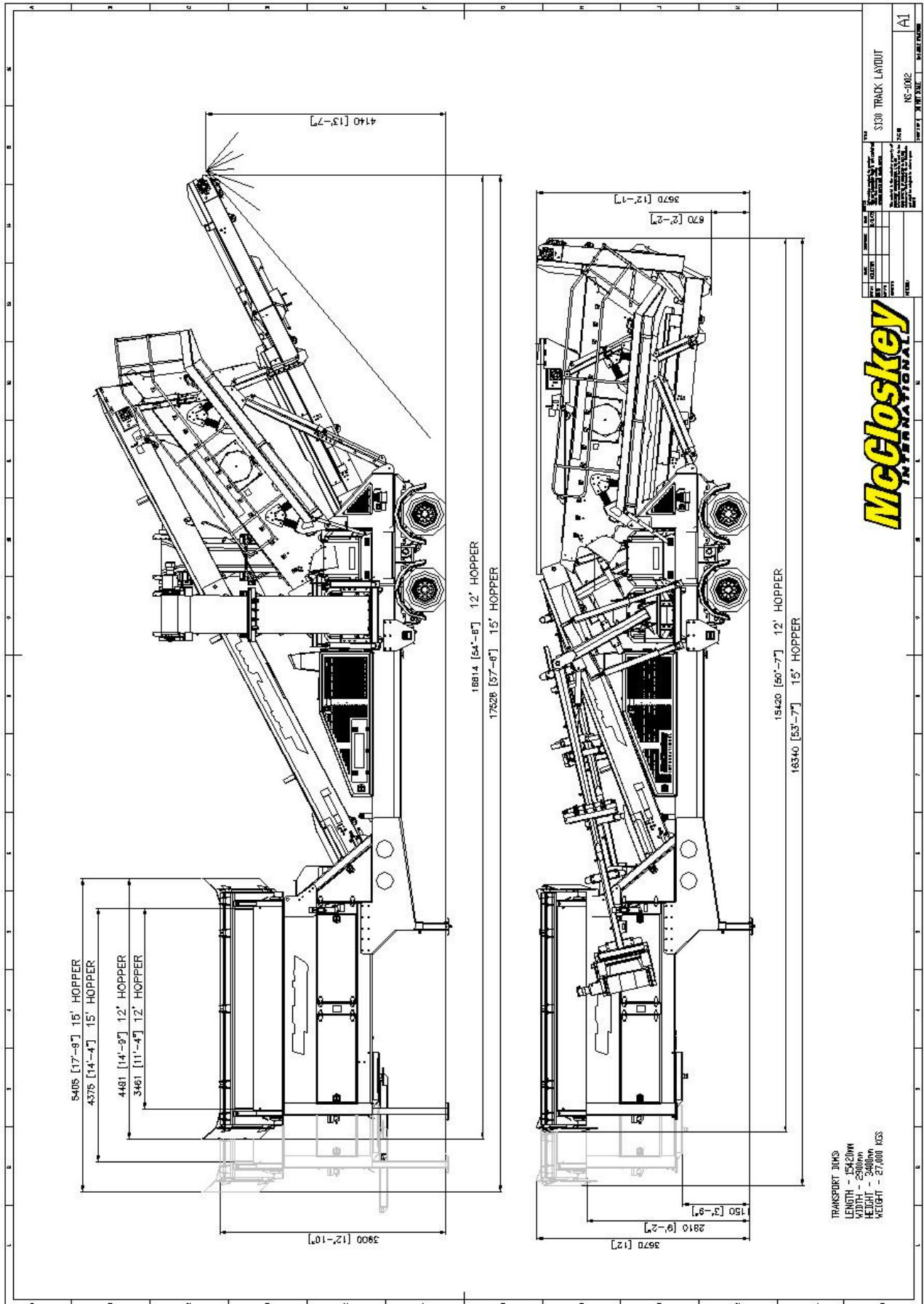
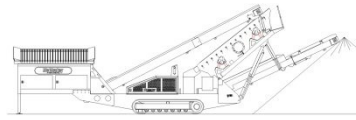
OPTIONS

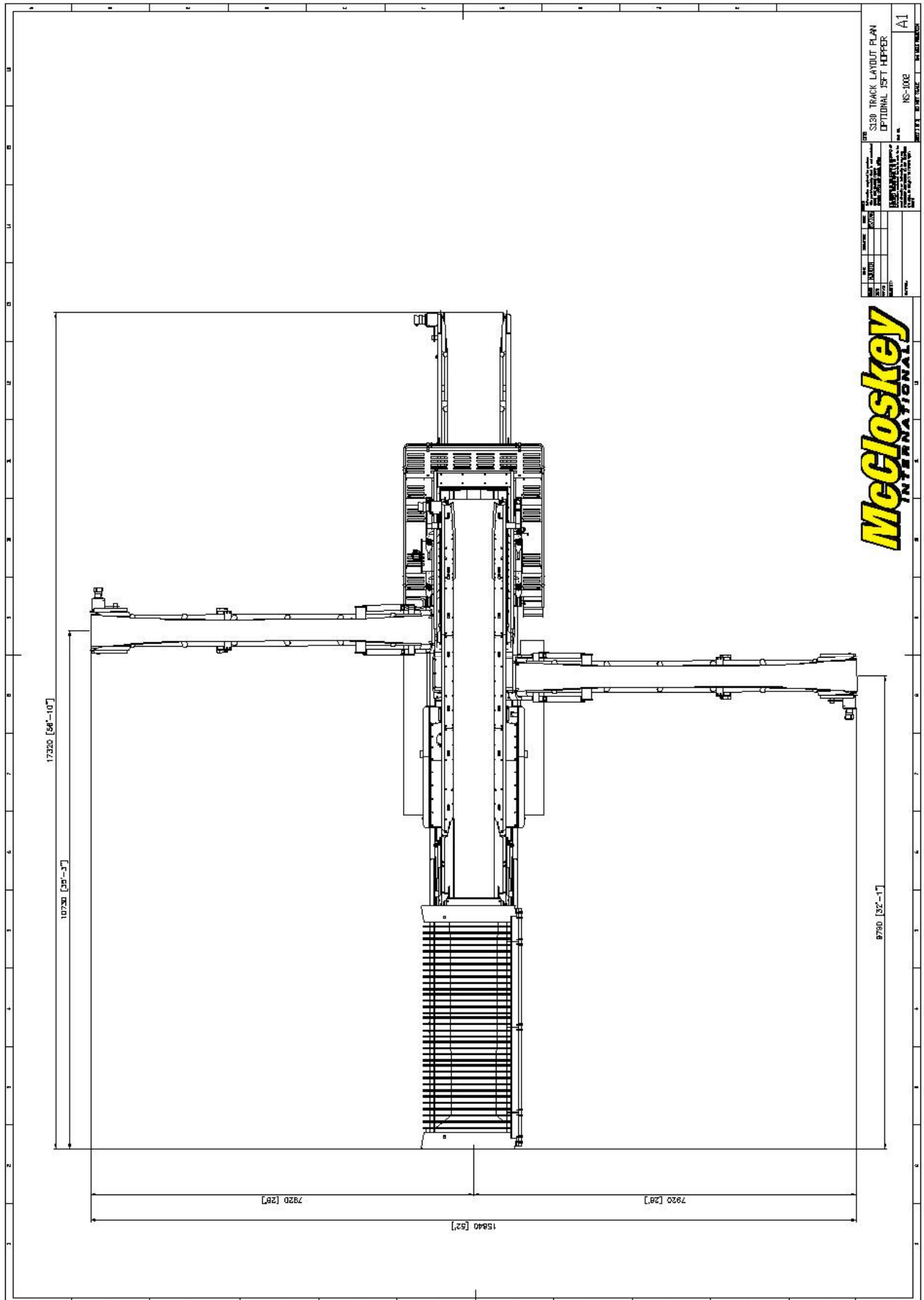
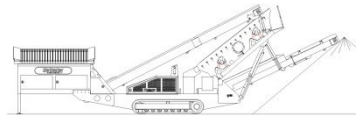
Single or double deck live head
Roll-in bogie system
Single shaft shredder
2 Deck Rinser
Crusher chute (available with 15ft hopper only)
Radio remote control

SAFETY FEATURES

External belt alignment points
External grease points
Engine safety shutdown systems
Full safety guarding for nip points





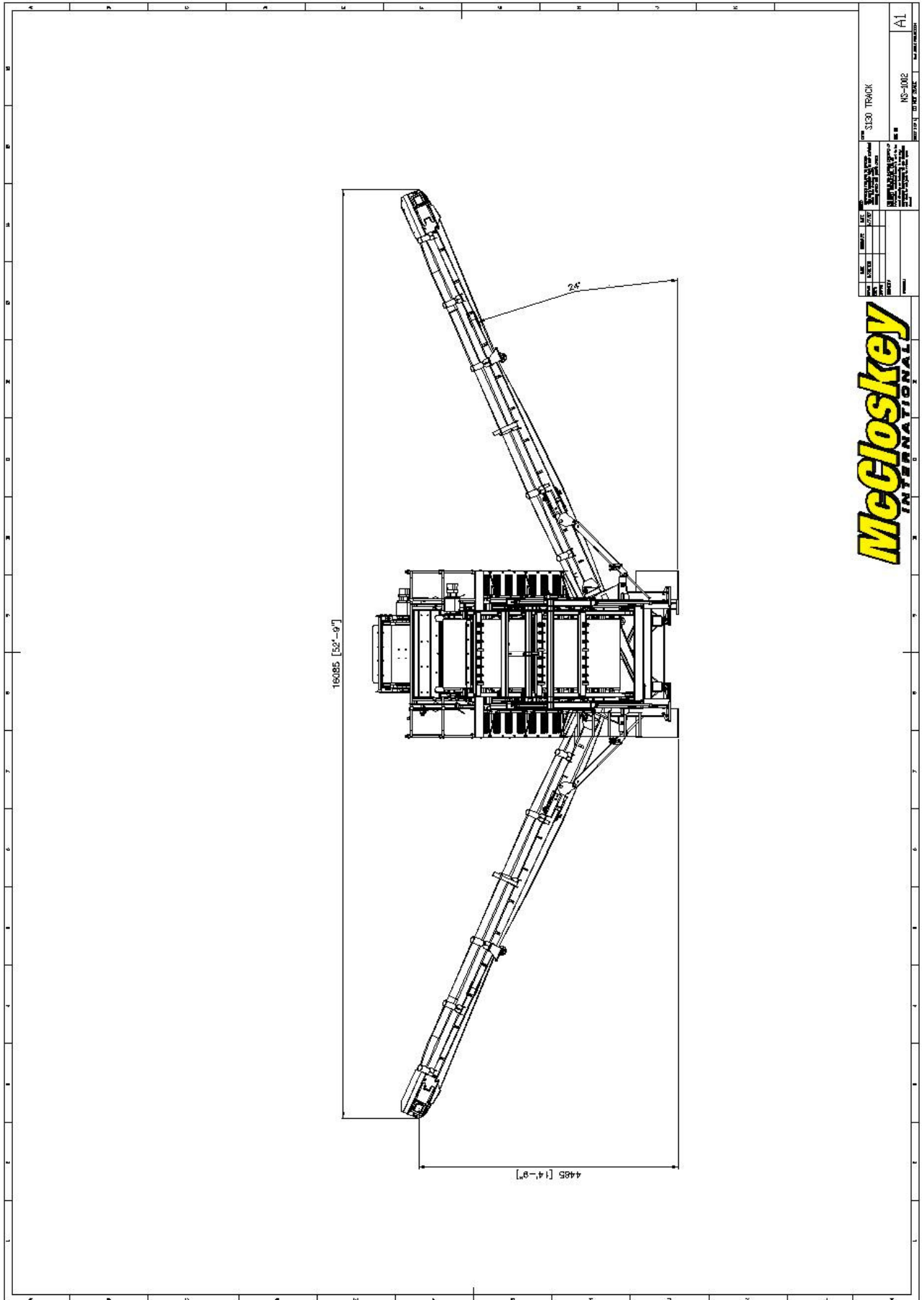
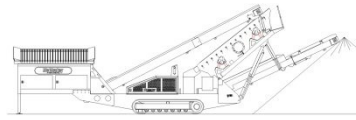


McCloskey

INTERNATIONAL

S130 TRACK LAYOUT PLAN OPTIONAL PST HOPPER	
REV	DATE
1	11/06/06
2	11/06/06
3	11/06/06
4	11/06/06
5	11/06/06
6	11/06/06
7	11/06/06
8	11/06/06
9	11/06/06
10	11/06/06
11	11/06/06
12	11/06/06
13	11/06/06
14	11/06/06
15	11/06/06
16	11/06/06
17	11/06/06
18	11/06/06
19	11/06/06
20	11/06/06
21	11/06/06
22	11/06/06
23	11/06/06
24	11/06/06
25	11/06/06
26	11/06/06
27	11/06/06
28	11/06/06
29	11/06/06
30	11/06/06
31	11/06/06
32	11/06/06
33	11/06/06
34	11/06/06
35	11/06/06
36	11/06/06
37	11/06/06
38	11/06/06
39	11/06/06
40	11/06/06
41	11/06/06
42	11/06/06
43	11/06/06
44	11/06/06
45	11/06/06
46	11/06/06
47	11/06/06
48	11/06/06
49	11/06/06
50	11/06/06
51	11/06/06
52	11/06/06
53	11/06/06
54	11/06/06
55	11/06/06
56	11/06/06
57	11/06/06
58	11/06/06
59	11/06/06
60	11/06/06
61	11/06/06
62	11/06/06
63	11/06/06
64	11/06/06
65	11/06/06
66	11/06/06
67	11/06/06
68	11/06/06
69	11/06/06
70	11/06/06
71	11/06/06
72	11/06/06
73	11/06/06
74	11/06/06
75	11/06/06
76	11/06/06
77	11/06/06
78	11/06/06
79	11/06/06
80	11/06/06
81	11/06/06
82	11/06/06
83	11/06/06
84	11/06/06
85	11/06/06
86	11/06/06
87	11/06/06
88	11/06/06
89	11/06/06
90	11/06/06
91	11/06/06
92	11/06/06
93	11/06/06
94	11/06/06
95	11/06/06
96	11/06/06
97	11/06/06
98	11/06/06
99	11/06/06
100	11/06/06
101	11/06/06
102	11/06/06
103	11/06/06
104	11/06/06
105	11/06/06
106	11/06/06
107	11/06/06
108	11/06/06
109	11/06/06
110	11/06/06
111	11/06/06
112	11/06/06
113	11/06/06
114	11/06/06
115	11/06/06
116	11/06/06
117	11/06/06
118	11/06/06
119	11/06/06
120	11/06/06
121	11/06/06
122	11/06/06
123	11/06/06
124	11/06/06
125	11/06/06
126	11/06/06
127	11/06/06
128	11/06/06
129	11/06/06
130	11/06/06
131	11/06/06
132	11/06/06
133	11/06/06
134	11/06/06
135	11/06/06
136	11/06/06
137	11/06/06
138	11/06/06
139	11/06/06
140	11/06/06
141	11/06/06
142	11/06/06
143	11/06/06
144	11/06/06
145	11/06/06
146	11/06/06
147	11/06/06
148	11/06/06
149	11/06/06
150	11/06/06
151	11/06/06
152	11/06/06
153	11/06/06
154	11/06/06
155	11/06/06
156	11/06/06
157	11/06/06
158	11/06/06
159	11/06/06
160	11/06/06
161	11/06/06
162	11/06/06
163	11/06/06
164	11/06/06
165	11/06/06
166	11/06/06
167	11/06/06
168	11/06/06
169	11/06/06
170	11/06/06
171	11/06/06
172	11/06/06
173	11/06/06
174	11/06/06
175	11/06/06
176	11/06/06
177	11/06/06
178	11/06/06
179	11/06/06
180	11/06/06
181	11/06/06
182	11/06/06
183	11/06/06
184	11/06/06
185	11/06/06
186	11/06/06
187	11/06/06
188	11/06/06
189	11/06/06
190	11/06/06
191	11/06/06
192	11/06/06
193	11/06/06
194	11/06/06
195	11/06/06
196	11/06/06
197	11/06/06
198	11/06/06
199	11/06/06
200	11/06/06
201	11/06/06
202	11/06/06
203	11/06/06
204	11/06/06
205	11/06/06
206	11/06/06
207	11/06/06
208	11/06/06
209	11/06/06
210	11/06/06
211	11/06/06
212	11/06/06
213	11/06/06
214	11/06/06
215	11/06/06
216	11/06/06
217	11/06/06
218	11/06/06
219	11/06/06
220	11/06/06
221	11/06/06
222	11/06/06
223	11/06/06
224	11/06/06
225	11/06/06
226	11/06/06
227	11/06/06
228	11/06/06
229	11/06/06
230	11/06/06
231	11/06/06
232	11/06/06
233	11/06/06
234	11/06/06
235	11/06/06
236	11/06/06
237	11/06/06
238	11/06/06
239	11/06/06
240	11/06/06
241	11/06/06
242	11/06/06
243	11/06/06
244	11/06/06
245	11/06/06
246	11/06/06
247	11/06/06
248	11/06/06
249	11/06/06
250	11/06/06
251	11/06/06
252	11/06/06
253	11/06/06
254	11/06/06
255	11/06/06
256	11/06/06
257	11/06/06
258	11/06/06
259	11/06/06
260	11/06/06
261	11/06/06
262	11/06/06
263	11/06/06
264	11/06/06
265	11/06/06
266	11/06/06
267	11/06/06
268	11/06/06
269	11/06/06
270	11/06/06
271	11/06/06
272	11/06/06
273	11/06/06
274	11/06/06
275	11/06/06
276	11/06/06
277	11/06/06
278	11/06/06
279	11/06/06
280	11/06/06
281	11/06/06
282	11/06/06
283	11/06/06
284	11/06/06
285	11/06/06
286	11/06/06
287	11/06/06
288	11/06/06
289	11/06/06
290	11/06/06
291	11/06/06
292	11/06/06
293	11/06/06
294	11/06/06
295	11/06/06
296	11/06/06
297	11/06/06
298	11/06/06
299	11/06/06
300	11/06/06
301	11/06/06
302	11/06/06
303	11/06/06
304	11/06/06
305	11/06/06
306	11/06/06
307	11/06/06
308	11/06/06
309	11/06/06
310	11/06/06
311	11/06/06
312	11/06/06
313	11/06/06
314	11/06/06
315	11/06/06
316	11/06/06
317	11/06/06
318	11/06/06
319	11/06/06
320	11/06/06
321	11/06/06
322	11/06/06
323	11/06/06
324	11/06/06
325	11/06/06
326	11/06/06
327	11/06/06
328	11/06/06
329	11/06/06
330	11/06/06
331	11/06/06
332	11/06/06
333	11/06/06
334	11/06/06
335	11/06/06
336	11/06/06
337	11/06/06
338	11/06/06
339	11/06/06
340	11/06/06
341	11/06/06
342	11/06/06
343	11/06/06
344	11/06/06
345	11/06/06
346	11/06/06
347	11/06/06
348	11/06/06
349	11/06/06
350	11/06/06
351	11/06/06
352	11/06/06
353	11/06/06
354	11/06/06
355	11/06/06
356	11/06/06
357	11/06/06
358	11/06/06
359	11/06/06
360	11/06/06
361	11/06/06
362	11/06/06
363	11/06/06
364	11/06/06
365	11/06/06
366	11/06/06
367	11/06/06
368	11/06/06
369	11/06/06
370	11/06/06
371	11/06/06
372	11/06/06
373	11/06/06
374	11/06/06
375	11/06/06
376	11/06/06
377	11/06/06
378	11/06/06
379	11/06/06
380	11/06/06
381	11/06/06
382	11/06/06
383	11/06/06
384	11/06/06
385	11/06/06
386	11/06/06
387	11/06/06
388	11/06/06
389	11/06/06
390	11/06/06
391	11/06/06
392	11/06/06
393	11/06/06
394	11/06/06
395	11/06/06
396	11/06/06
397	11/06/06
398	11/06/06
399	11/06/06
400	11/06/06

NS-1000
A1



McCloskey
INTERNATIONAL

REV	DATE	DESCRIPTION
1	11/15/06	ISSUE 005
2	11/15/06	ISSUE 005
3	11/15/06	ISSUE 005
4	11/15/06	ISSUE 005
5	11/15/06	ISSUE 005
6	11/15/06	ISSUE 005
7	11/15/06	ISSUE 005
8	11/15/06	ISSUE 005
9	11/15/06	ISSUE 005
10	11/15/06	ISSUE 005
11	11/15/06	ISSUE 005
12	11/15/06	ISSUE 005
13	11/15/06	ISSUE 005
14	11/15/06	ISSUE 005
15	11/15/06	ISSUE 005
16	11/15/06	ISSUE 005
17	11/15/06	ISSUE 005
18	11/15/06	ISSUE 005
19	11/15/06	ISSUE 005
20	11/15/06	ISSUE 005
21	11/15/06	ISSUE 005
22	11/15/06	ISSUE 005
23	11/15/06	ISSUE 005
24	11/15/06	ISSUE 005
25	11/15/06	ISSUE 005
26	11/15/06	ISSUE 005
27	11/15/06	ISSUE 005
28	11/15/06	ISSUE 005
29	11/15/06	ISSUE 005
30	11/15/06	ISSUE 005
31	11/15/06	ISSUE 005
32	11/15/06	ISSUE 005
33	11/15/06	ISSUE 005
34	11/15/06	ISSUE 005
35	11/15/06	ISSUE 005
36	11/15/06	ISSUE 005
37	11/15/06	ISSUE 005
38	11/15/06	ISSUE 005
39	11/15/06	ISSUE 005
40	11/15/06	ISSUE 005
41	11/15/06	ISSUE 005
42	11/15/06	ISSUE 005
43	11/15/06	ISSUE 005
44	11/15/06	ISSUE 005
45	11/15/06	ISSUE 005
46	11/15/06	ISSUE 005
47	11/15/06	ISSUE 005
48	11/15/06	ISSUE 005
49	11/15/06	ISSUE 005
50	11/15/06	ISSUE 005
51	11/15/06	ISSUE 005
52	11/15/06	ISSUE 005
53	11/15/06	ISSUE 005
54	11/15/06	ISSUE 005
55	11/15/06	ISSUE 005
56	11/15/06	ISSUE 005
57	11/15/06	ISSUE 005
58	11/15/06	ISSUE 005
59	11/15/06	ISSUE 005
60	11/15/06	ISSUE 005
61	11/15/06	ISSUE 005
62	11/15/06	ISSUE 005
63	11/15/06	ISSUE 005
64	11/15/06	ISSUE 005
65	11/15/06	ISSUE 005
66	11/15/06	ISSUE 005
67	11/15/06	ISSUE 005
68	11/15/06	ISSUE 005
69	11/15/06	ISSUE 005
70	11/15/06	ISSUE 005
71	11/15/06	ISSUE 005
72	11/15/06	ISSUE 005
73	11/15/06	ISSUE 005
74	11/15/06	ISSUE 005
75	11/15/06	ISSUE 005
76	11/15/06	ISSUE 005
77	11/15/06	ISSUE 005
78	11/15/06	ISSUE 005
79	11/15/06	ISSUE 005
80	11/15/06	ISSUE 005
81	11/15/06	ISSUE 005
82	11/15/06	ISSUE 005
83	11/15/06	ISSUE 005
84	11/15/06	ISSUE 005
85	11/15/06	ISSUE 005
86	11/15/06	ISSUE 005
87	11/15/06	ISSUE 005
88	11/15/06	ISSUE 005
89	11/15/06	ISSUE 005
90	11/15/06	ISSUE 005
91	11/15/06	ISSUE 005
92	11/15/06	ISSUE 005
93	11/15/06	ISSUE 005
94	11/15/06	ISSUE 005
95	11/15/06	ISSUE 005
96	11/15/06	ISSUE 005
97	11/15/06	ISSUE 005
98	11/15/06	ISSUE 005
99	11/15/06	ISSUE 005
100	11/15/06	ISSUE 005