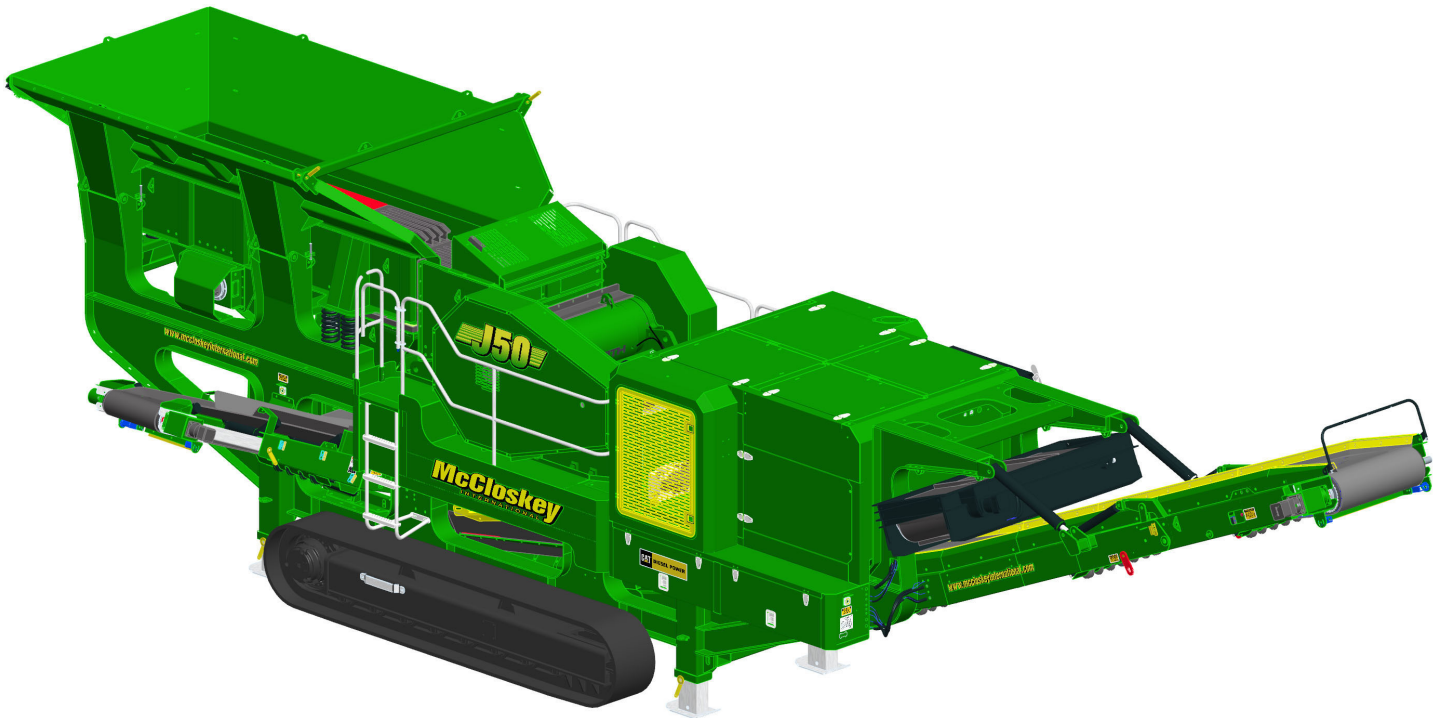
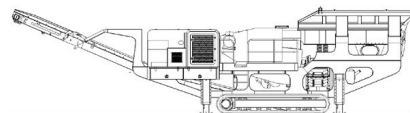


SPECIFICATIONS



McCloskey

J50



DESCRIPTION

Heavy duty track mounted Crusher with following features:

- 1270 (50") x 660 (26") single toggle jaw.
- 350Hp C9 Cat engine.
- Track or Track c/w Wheel bogie.
- Integrated hydraulic folding hopper.
- Integrated hydraulic folding stockpiling conveyors.
- I-beam plate fabricated chassis construction.
- Large gap between crusher discharge and main conveyor feedboot
- Open chassis design for ease of maintenance
- Fast setup time

DIMENSIONS AND WEIGHTS

Length - working all models	16.33m (53' - 7")
Length - transport all models	14.50m (47' - 7")
Width - transport all models	2.9m (9' - 6")
Height - transport track	3.4m (11' - 2")
Weight - track	48,200 Kgs (106,260 lbs) inc magnet

CAPACITIES

Diesel tank capacity	800 L (211 US gal)
Hydraulic tank capacity	1800 L (475 US Gals)

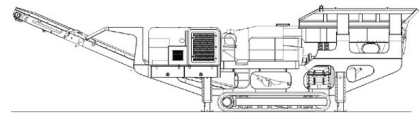
CRUSHING CHAMBER

Feed opening	1270 (50") x 660 (26")
Crusher speed	280 rpm
Crusher Drive	Hydraulic – V-Belts
Min. opening	51mm (2") *Note Applications
Max. opening	165mm (6.5")
Jaw weight	14,970kg (33,000 lbs)
Closed side setting adjustment option 1	Single hydraulic ram replaces toggle plate with automated adjust, relief and reset control system.
Closed side setting adjustment option 2	Replaceable toggle plate with twin wedges and rams utilizes simple manual mechanical adjustment system.
Motor	Kawasaki axial piston 530cc/rev
Flow rate	440 Lpm (116.2 US gpm)
Level sensor	Ultrasonic
Load sensor	Hydraulic

Model 2650 capacity table														
	2.5		3		3.5		4		5		6		7	
	low	high	low	high	low	high	low	high	low	high	low	high	low	high
US	160	260	180	295	200	320	220	360	250	405	295	485	330	555
Metric	145	236	164	268	182	291	200	327	227	368	268	441	300	505

Note:

Capacity may vary as much as 25%, depending on material type.

**GRIZZLY FEEDER**

Feeder width	1180mm (46.5")
Feeder length	4300mm (169")
Drive	Hydraulic
Grizzly section opening	Tapered 40-61mm (1.5" – 2.5")
Grizzly section length	1650mm (65")
Motor	David Brown MCC 2210 70.1cc/rev
Flow rate	68.4 Lpm (18.1 US gpm)
Adjustable speed	Yes – via mechanical Flow Control
Variable speed	Yes – via electrical proportional
Maximum speed	975rpm

HOPPER

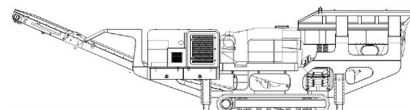
Length	4770mm (15' - 8")
Width	2535mm (8' - 4")
Volume	6.8m ³ (8.9yd ³)
Material	10mm Hardox sides
Locking system	Wedge type and toggle

SIDE CONVEYOR

Stockpile height	2584mm (8' – 6")
Belt width	650mm (26")
Belt spec	EP 400/3 3+1.5
Drive drum dia.	220mm (8.6")
Tail drum dia.	220mm (8.6") - spoked
Motor	OMT400
Flow rate	43.7 Lpm (11.5 US gpm)
Adjustable speed	YES
Maximum speed	109.3 rpm

MAIN CONVEYOR

Stockpile height	4210mm (13' – 10")
Belt width	1050mm (42")
Belt spec	Plain 500/3 8+2
Drive drum dia.	350mm (13.7")
Tail drum dia.	270mm (10.6") - spoked
Motor	OMV630
Flow rate	87.4 Lpm (23.1 US gpm)
Maximum speed	138.7 rpm
Angle adjustable	YES
Quick release	YES

**POWERUNIT AND HYDRAULICS**

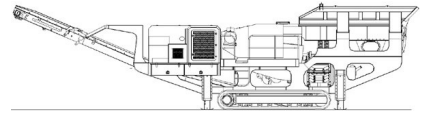
Engine	CAT C9
Engine power	261 kW (350 HP)
Engine speed	1900 rpm
Flywheel Pump 1	Kawasaki K3V140DT
LH PTO Pump 2	David Brown 5036 5023
Front PTO Pump 3	David Brown 5046 2SPA11
Total system flow	660.4 Lpm (174.5 US Gpm)
Hydraulic tank capacity	1800 L (475 US Gals)
Hydraulic tank ratio	2.73 : 1
Hydraulic Oil cooler	YES

ELECTRICS

Emergency stops	4 off, 2 feeder, 2 powerunit
Chassis cabling	Armored cable
Start Siren	YES - 10 sec delay
Control panel	Plus 1 Danfoss colour screen
Engine shutdowns:	Low oil pressure High water temp Air filter blockage (selectable) Fuel contamination Low hydraulic tank level High hydraulic oil temperature
Radio control tracks	OPTION - Hetronic system
Pendant track control	YES - plugged in control cabinet

TRACKS

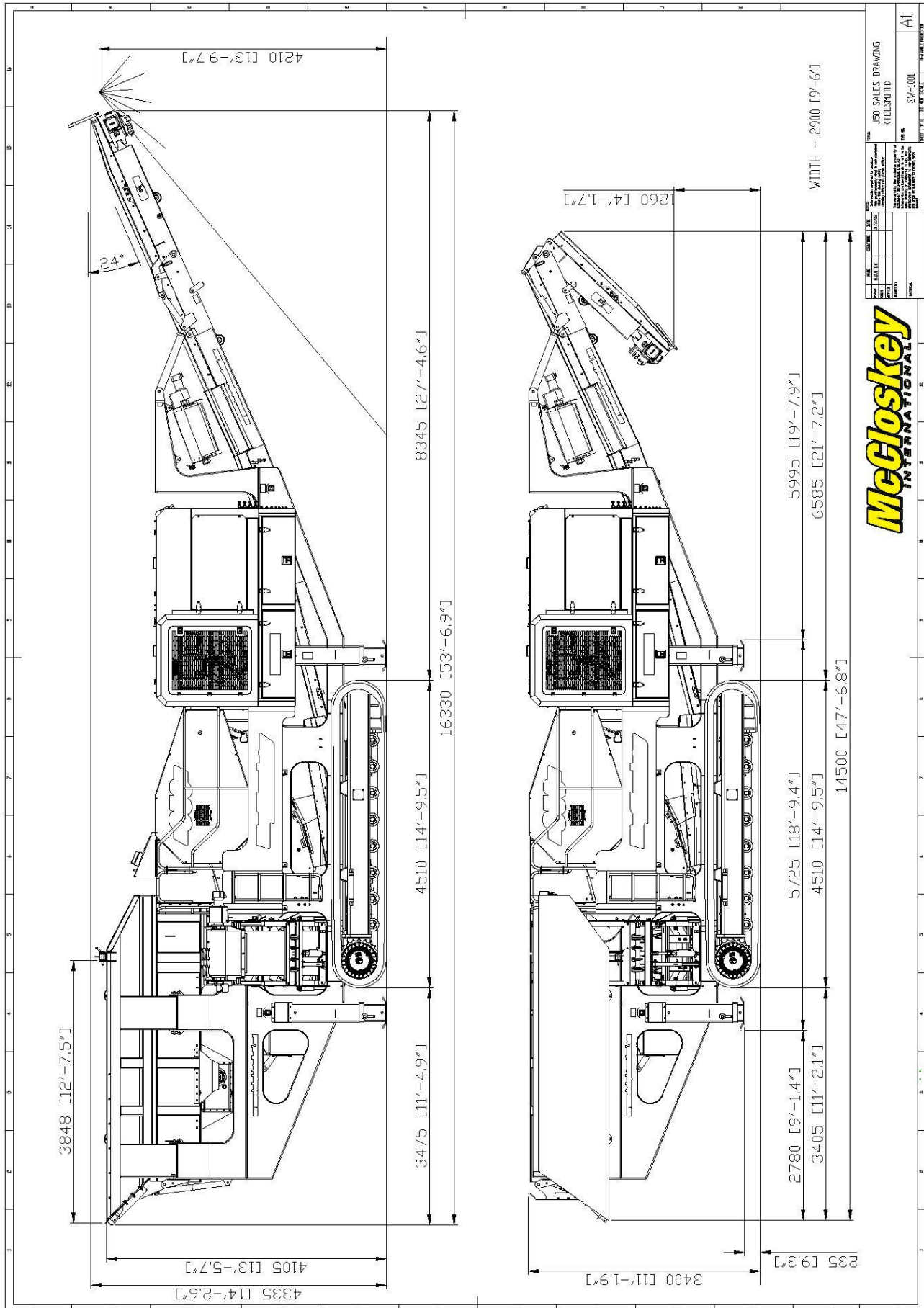
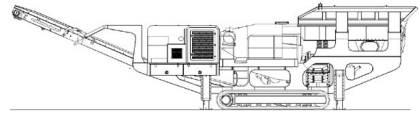
Width	500mm (19.7")
Length	3800mm (12' - 6") crs
Height	798mm (31.4")
Gearbox	Bonfiglioli 711
Ratio	153:1
Motor	Rexroth 90
Speed max	1.50 Kph (0.93 Mph)
Flow rate	138 Lpm (36.45 US gpm)
Multiple speeds	Three speed system selectable at control panel with smooth start / stop.
Attachment to chassis	Bolt On for quick change

**OPTIONS**

Roll-in bogie system
Main conveyor variable speed control
Interlock system
Hopper Extensions
Overband magnet
Water Pump and dust suppression system
Quarry or recycling jaw dies
Crusher Deflector Plate – (Belt Protection) STANDARD
Work lights
Belt Scale
Automated hydraulic toggle ram system
Mechanical wedge adjust with toggle plate

SAFETY FEATURES

External belt alignment points
External grease points
Engine safety shutdown systems
Full safety guarding for nip points



All specifications are current as of this printing, but are subject to change