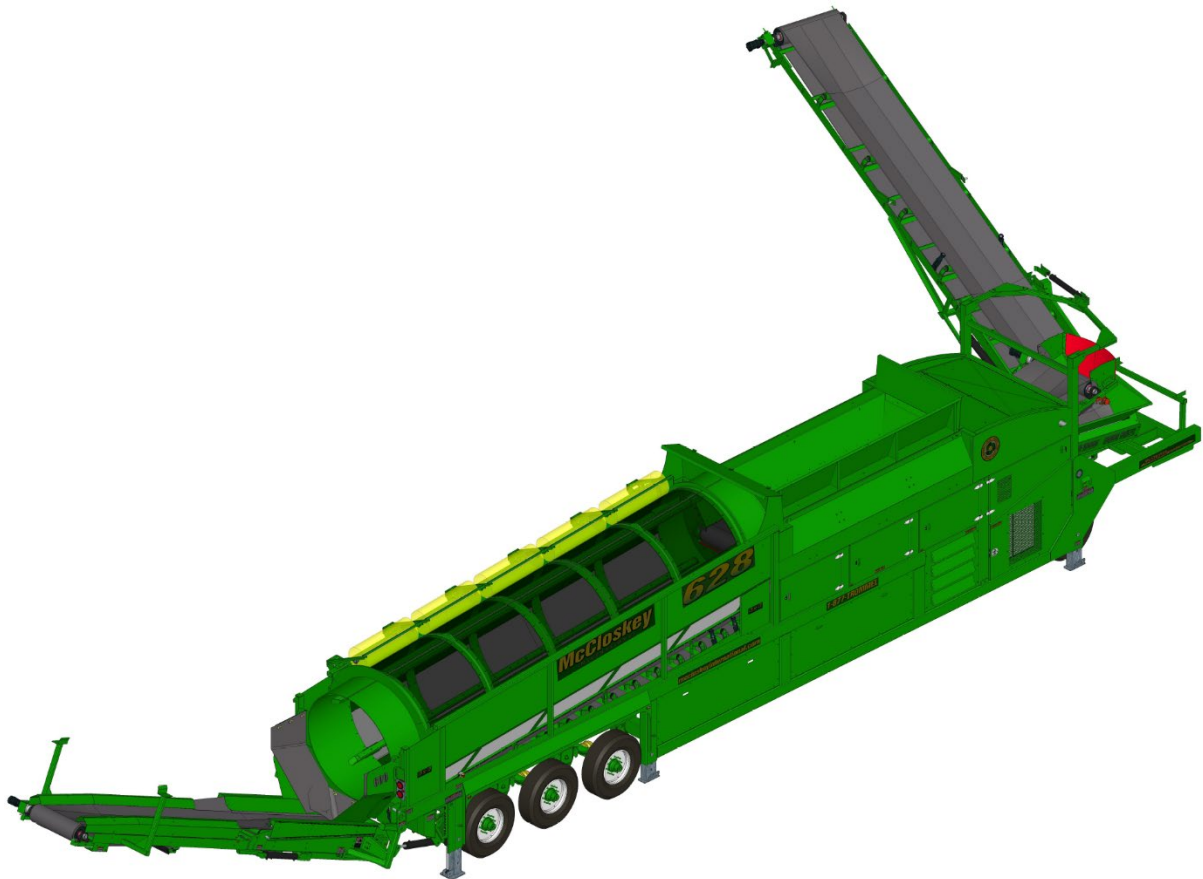
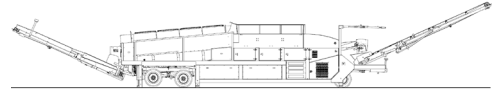


## SPECIFICATIONS

### 628RE Trommel



Note: Optional equipment may be displayed



## DESCRIPTION

Heavy duty mobile trommel with following features:

- 6' x 28' heavy duty trommel drum
- 130 kW (174 hp) diesel engine
- Wheeled mobility
- Integrated hydraulic folding stockpiling conveyors
- Remote control radial conveyor
- Fast on-site setup time (10 minutes)

## SAFETY FEATURES

- External belt alignment points
- External grease points
- Full safety guarding for nip points
- Engine safety shutdown systems

## DIMENSIONS AND WEIGHTS

### Working Dimensions

Length.....	30.50 m (100' – 1")
Width .....	15.12 m (49' – 7")
Height .....	5.13 m (16' – 10")

### Transport Dimensions

Length.....	19.88 m (65' – 3")
Width .....	2.59 m (8' – 6")
Transport Height.....	4.12 m (13' – 6")
Loading Height .....	3.22 m (10' – 7")

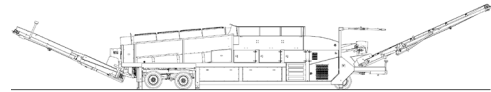
Weight (approximate)..... 27 100 Kgs (59 750 lbs.)

## CAPACITIES

Hydraulic tank capacity .....	940 L (250 US gal)
Diesel tank capacity.....	1210 L (320 US gal)
Hopper Capacity.....	5 m <sup>3</sup> (6.5 yd <sup>3</sup> )

## FEED CONVEYOR

Belt width .....	1050 mm (42")
Belt spec.....	Plain 630/4 6+2
Drive drum diameter.....	324 mm (12 ¾ ")
Tail drum diameter.....	305 mm (12")
Gearbox.....	Brevini CTD2051
Gearbox ratio.....	34,7:1
Motor .....	Sam Hydraulik BRZ250
Flow rate.....	83 lpm (22 US gpm)
Adjustable speed .....	Yes
Maximum speed .....	10 rpm

**FINES CONVEYOR**

Belt width .....	1050 mm (42")
Belt spec .....	Plain 400/3 4+2
Drive drum diameter .....	254 mm (10")
Tail drum diameter .....	305 mm (12")
Motor .....	White DR33
Flow rate .....	75 lpm (20 US gpm)
Maximum speed .....	143 rpm

**RADIAL CONVEYOR**

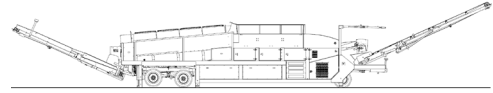
Stockpile height .....	5.13 m (16' – 10")
Belt width .....	1050 mm (42")
Belt spec .....	Plain - 400/3 4+2
Drive drum diameter .....	254 mm (10")
Tail drum diameter .....	254 mm (10")
Motor .....	White DR33
Flow rate .....	75 lpm (20 US gpm)
Maximum speed .....	143 rpm

**OVERSIZE CONVEYOR**

Stockpile height .....	3.49 m (11' – 5 ½")
Belt width .....	900 mm (36")
Belt spec .....	Chevron - 315/3 3+1.5
Drive drum diameter .....	254 mm (10")
Tail drum diameter .....	254 mm (10")
Motor .....	White DR33
Flow rate .....	68 lpm (18 US gpm)
Maximum speed .....	130 rpm
Adjustable speed .....	Yes

**TROMMEL (DRUM)**

Dimensions .....	1.83 m x 8.53 m (6' x 28')
Screening Area .....	34.5 m <sup>2</sup> (370 ft <sup>2</sup> )
Trommel angle .....	5 deg
Trommel motor .....	Poclain MSE02 (22.2 cc/rev)
Drive system .....	Direct drive with 18x9 rubber wheels
Hydraulic flow rate .....	170 lpm (45 US gpm)
Trommel speed .....	10 – 30 rpm
Adjustable speed .....	Yes
Longitudinal Trommel Supports .....	5 box type lifters
Cleaning Brushes .....	Ground adjustable Ø16x 50" polyester brushes

**POWERUNIT AND HYDRAULICS**

Engine power.....	130 kW (174 hp) diesel engine
Engine speed.....	2200 rpm
Flywheel pump 1 .....	David Brown R5000
LH PTO pump 2.....	Vicker's V20
Total system flow.....	397 lpm (105 US gpm)
Hydraulic tank ratio.....	2.4 : 1
Hydraulic oil cooler .....	Yes

**ELECTRICS**

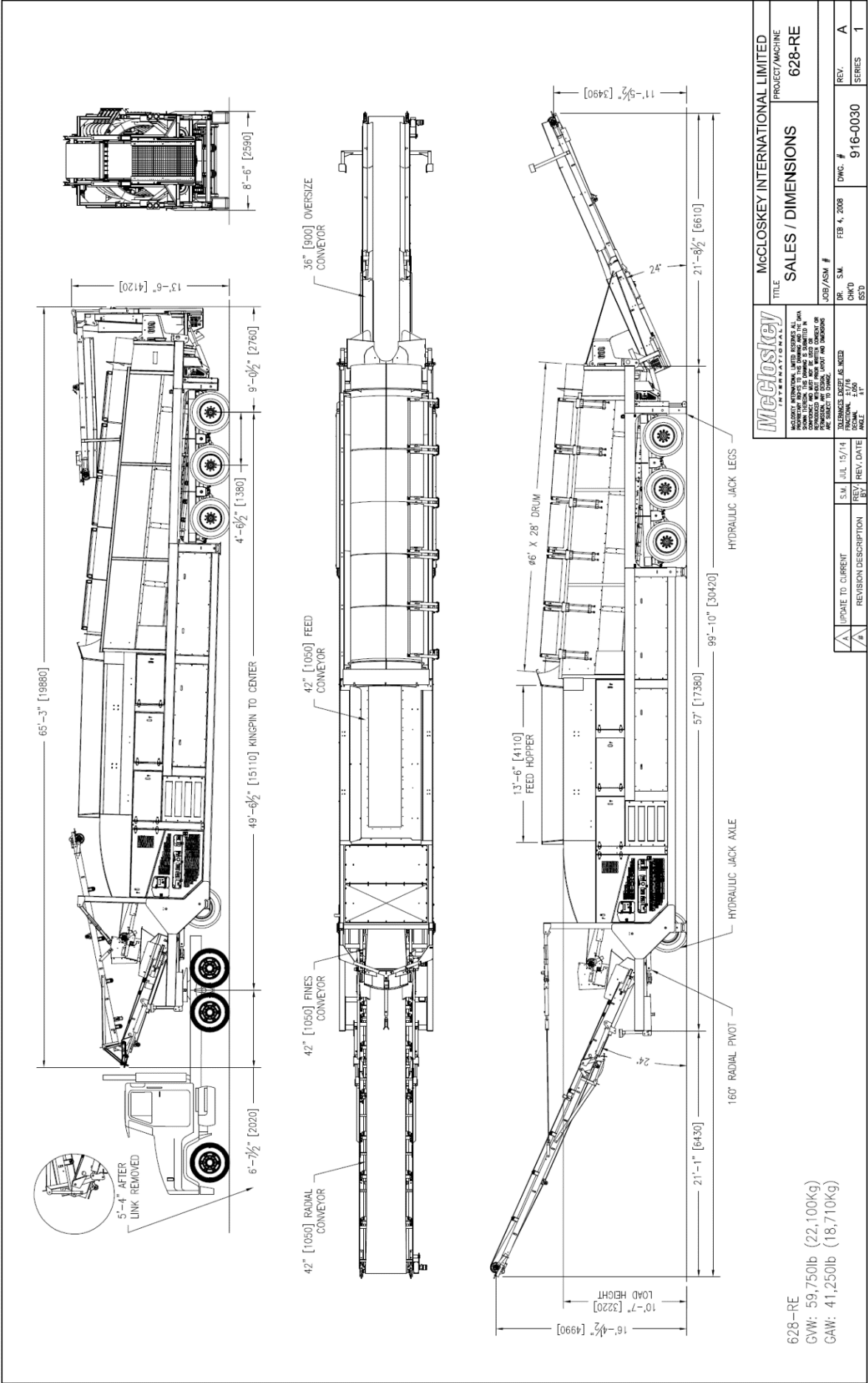
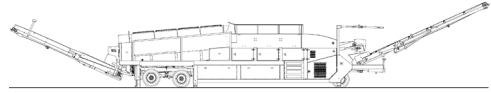
Emergency stops.....	4 off, all 4 corners of the machine
Chassis cabling .....	Armored cable
Start Siren.....	Yes – 10 sec delay
Engine room light.....	Yes
Remote radial .....	Yes – 6 function timed
Engine shutdowns:	
▪ Low oil pressure	
▪ High water temperature	
▪ Air filter blockage (selectable)	
▪ Fuel contamination	
▪ Low hydraulic tank level	

**WHEELS**

Axles.....	1380vmm (54") Spread Tri-axle
Wheels.....	Single 315/80R22.5 (6 tires)
Spring suspension .....	Yes
Brakes .....	Yes
Mudguards.....	Yes
ABS .....	Option

**OPTIONS**

- |                               |                                     |
|-------------------------------|-------------------------------------|
| ▪ Hydraulic Tipping Grid      | ▪ Remote Feeder on/off              |
| ▪ Double Brushes              | ▪ Punch Plate Screens               |
| ▪ Auto Reversing Fan          | ▪ Live Head - Double or Single Deck |
| ▪ Auxiliary Hydraulic Circuit |                                     |



<b>McCloskey</b> INTERNATIONAL	McCloskey INTERNATIONAL LIMITED
SALES / DIMENSIONS	PROJECT/MACHINE 628-RE
DR. S.M. CRO ESD	JOB/ASM # REV. # DWC. # 916-0030
JUL 15/14	FEB 4, 2008
REV. DATE	REV. #
BY	SERIES
REVISION DESCRIPTION	A
UPDATE TO CURRENT	1

628-RE  
 GW: 59,750lb (22,100kg)  
 CAW: 41,250lb (18,710kg)

REVISION DESCRIPTION

UPDATE TO CURRENT

REVISION DESCRIPTION

BY

REV. DATE

JUL 15/14

S.M.

DR. S.M.  
CRO  
ESD

JOB/ASM #  
REV. #  
DWC. #  
916-0030

McCloskey INTERNATIONAL LIMITED  
PROJECT/MACHINE  
628-RE