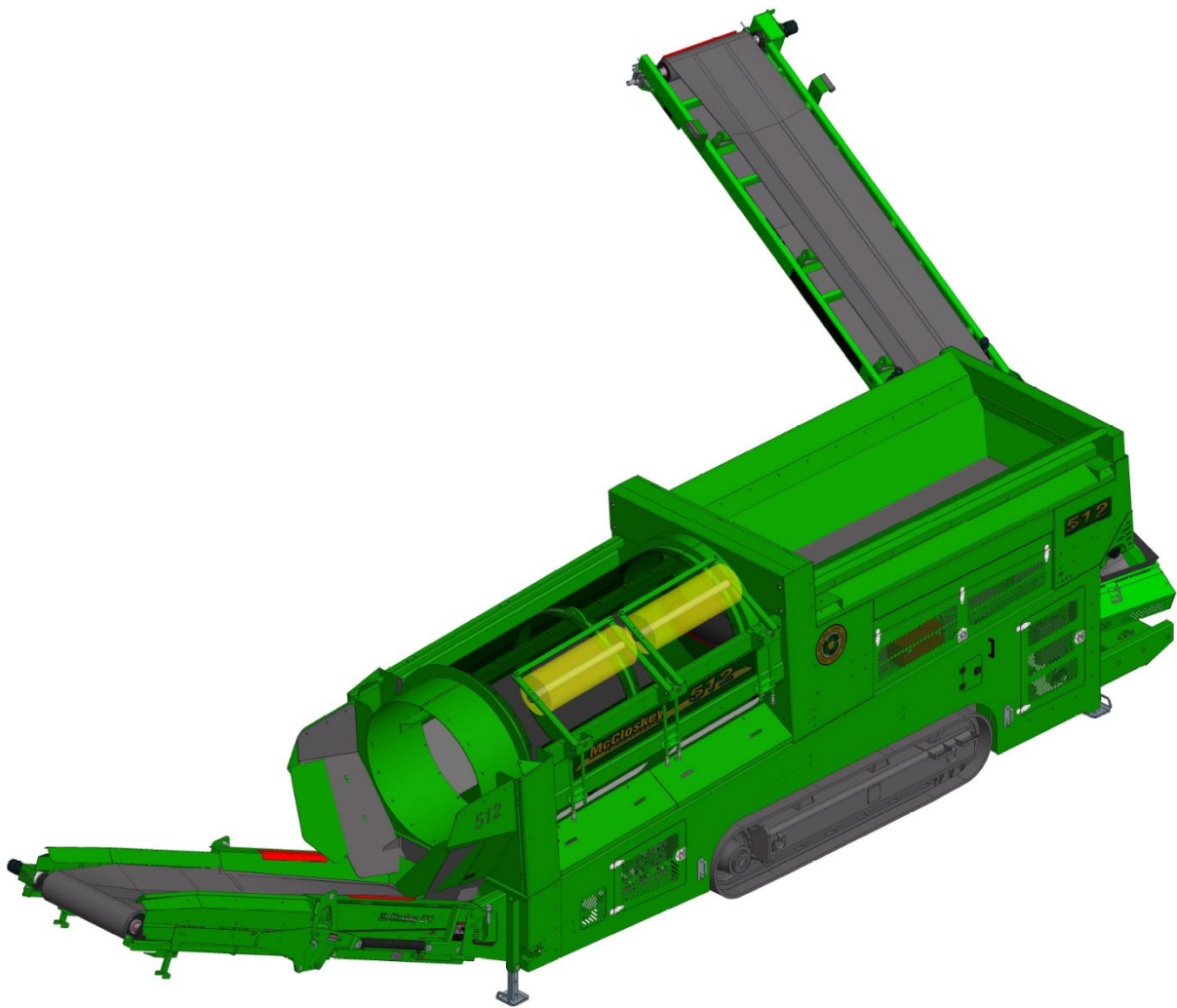
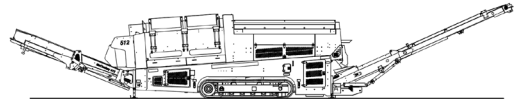


SPECIFICATIONS

512RET Trommel



Note: Optional equipment may be displayed



DESCRIPTION

Heavy duty mobile trommel with following features:

- 5' x 12' heavy duty trommel drum
- 74 kW (100 hp) diesel engine
- Track mobility
- Integrated hydraulic folding stockpiling conveyors
- Remote control radial conveyor
- Fast on-site setup time (10 minutes)

SAFETY FEATURES

- External belt alignment points
- External grease points
- Full safety guarding for nip points

DIMENSIONS AND WEIGHTS

Working Dimensions

Length.....	19.3 m (63' – 2")
Width	10.6 m (34' – 9 ")
Height	3.6 m (11' – 8")

Transport Dimensions

Length.....	10.7 m (35')
Width	2.5 m (8' – 2 ½ ")
Transport Height.....	3.3 m (10' – 9")
Loading Height	2.8 m (9' – 3")

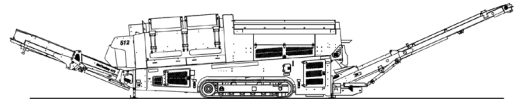
Weight 512RET (approximate).....	19 300 Kgs (42 500 lbs.)
Weight 512REGT (approximate).....	21 100 Kgs (46 500 lbs.)

CAPACITIES

Hydraulic tank capacity	600 L (160 US gal)
Diesel tank capacity.....	395 L (100 US gal)
Hopper Capacity.....	4 m ³ (5.25 yd ³)

FEED CONVEYOR

Belt width	900 mm (36")
Belt spec.....	Plain 500/3 5+1.5
Drive drum diameter.....	254 mm (10")
Tail drum diameter.....	204 mm (8")
Gearbox.....	Brevini CTD2051
Gearbox ratio.....	34,7:1
Gearbox torque.....	5,500 Nm cont
Motor	Sam Hydraulik BRZ250
Flow rate.....	83 lpm (22 US gpm)
Adjustable speed	Yes
Maximum speed	10 rpm

**FINES CONVEYOR**

Belt width	1200 mm (48")
Belt spec	Plain 400/3 4+2
Drive drum diameter	254 mm (10")
Tail drum diameter	254 mm (10")
Motor	White RE32
Flow rate	83 lpm (22 US gpm)
Maximum speed	157 rpm

RADIAL CONVEYOR

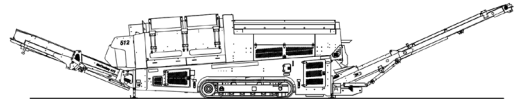
Stockpile height	3.55 m (11' – 8")
Belt width	900 mm (36")
Belt spec	Plain - 400/3 4+2
Drive drum diameter	204 mm (8")
Tail drum diameter	204 mm (8")
Motor	White RE24
Flow rate	83 lpm (22 US gpm)
Maximum speed	255 rpm

OVERSIZE CONVEYOR

Stockpile height	2.56 m (8' – 5")
Belt width	1050 mm (42")
Belt spec	Chevron - 315/3 3+1.5
Drive drum diameter	254 mm (10")
Tail drum diameter	254 mm (10")
Motor	White RE32
Flow rate	38 lpm (10 US gpm)
Maximum speed	72 rpm
Adjustable speed	Yes

TROMMEL (DRUM)

Dimensions	1.52 m x 3.66 m (5' x 12')
Screening Area	11.8 m ² (127 ft ²)
Trommel angle	5 deg
Trommel motor	White DT19 (18.3 cc/rev)
Drive system	Direct drive with 18x7 rubber wheels
Hydraulic flow rate	125 lpm (33 US gpm)
Trommel speed	10 – 30 rpm
Adjustable speed	Yes
Longitudinal Trommel Supports	4 angle type lifters
Cleaning Brushes	Ground adjustable Ø16x 50" polyester brushes

**POWERUNIT AND HYDRAULICS**

Engine power.....	74 kW (100) hp diesel engine
Engine speed.....	2200 rpm
Flywheel pump 1	P257 64, 42, 42
LH PTO pump 2.....	P124 20
Total system flow.....	330 lpm (87 US gpm)
Hydraulic tank ratio.....	1.9 : 1
Hydraulic oil cooler	Yes

ELECTRICS

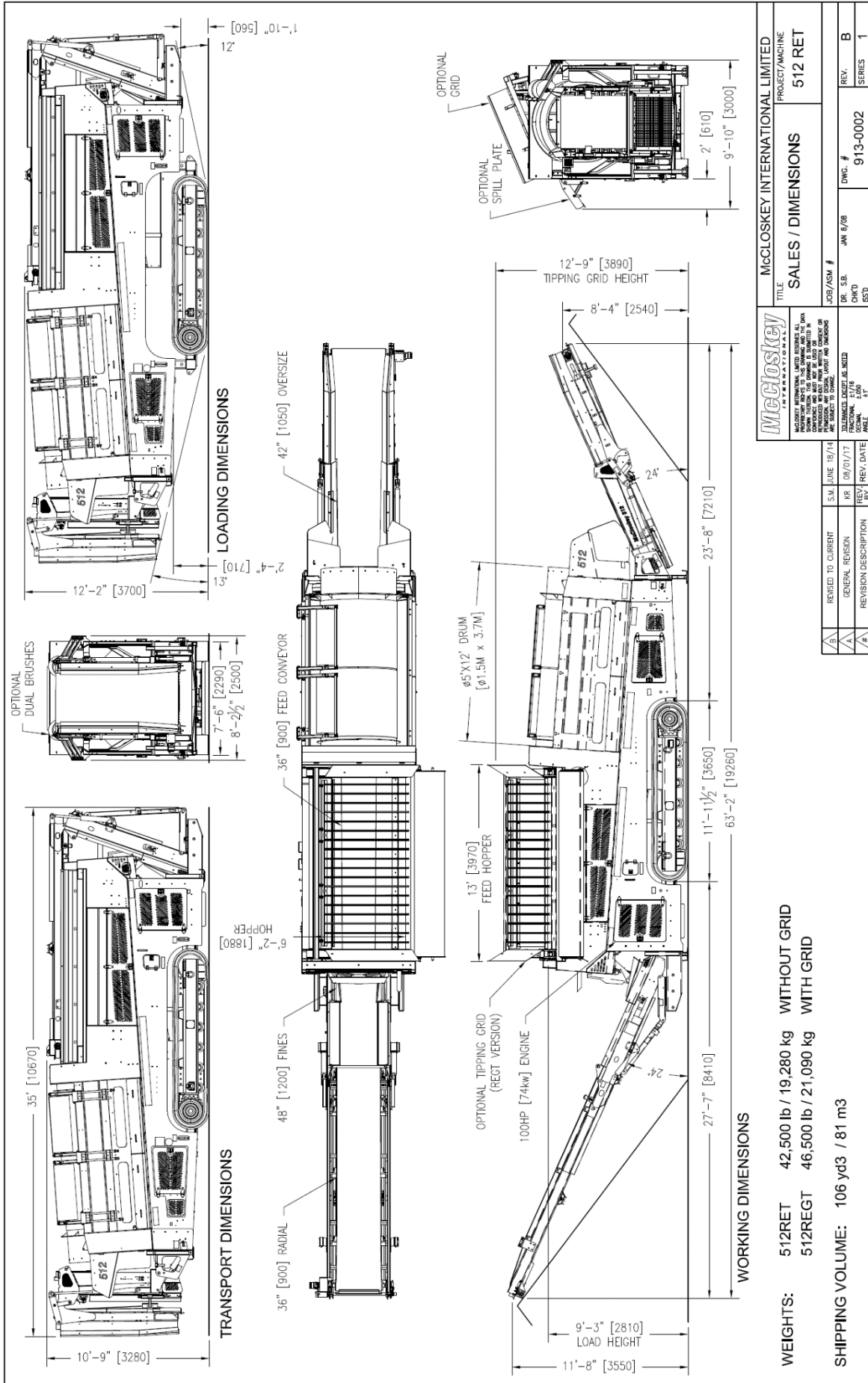
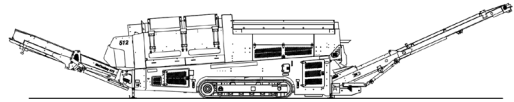
Emergency stops.....	4 off, 2 powerunit, 2 chassis RH&LH
Chassis cabling	Armored cable
Start Siren.....	Yes – 10 sec delay
Engine room light.....	Yes
Remote radial	Yes – 8 function timed
Radio-controlled tracks.....	Yes
Pendant track control	Yes – plugged at powerunit
Engine shutdowns:	
▪ Low oil pressure	
▪ High water temperature	
▪ Air filter blockage (selectable)	
▪ Fuel contamination	
▪ Low hydraulic tank level	

TRACKS

Width	400 mm (15.7")
Length.....	3700 mm (12')
Height	739 mm (29.4")
Gearbox.....	Bonfiglioli 707
Ratio	122:1
Motor	Rexroth 63
Motor speed (max)	1.5 km/h (0.9 mph)
Motor flow rate.....	83 lpm (22 US gpm)
Ground contact pressure.....	80.6 kPa (11.7 psi)
Attachment to chassis	Bolt-on for quick change

OPTIONS

- Hydraulic Tipping Grid
- Double Brushes
- Auto Reversing Fan
- Auxiliary Hydraulic Circuit
- Punch Plate Screens
- Remote Feeder on/off
- Spare Drum
- Live Head - Double or Single Deck



		McCloskey INTERNATIONAL LIMITED PROJECT/MACHINE 512 RET	
McCloskey INTERNATIONAL LIMITED reserves the right to change specifications without notice. The drawings are for information only. The drawings are not to be used for construction or manufacturing without the written consent of McCloskey International Limited. All dimensions are in millimeters unless otherwise stated.		TITLE SALES / DIMENSIONS	
REVISION TO CURRENT GENERAL REVISION REVISION DESCRIPTION BY DATE	S.M. JUNE 16/14 KR 08/01/17 REV. # DATE	JOB/ASM # DR. S.B. JAN 8/08 CHD GSD	DWG. # 913-0002 REV. # B SERIES 1
WEIGHTS: 512RET 42,500 lb / 19,280 kg WITHOUT GRID 512REGT 46,500 lb / 21,090 kg WITH GRID		SHIPPING VOLUME: 106 yd3 / 81 m3	