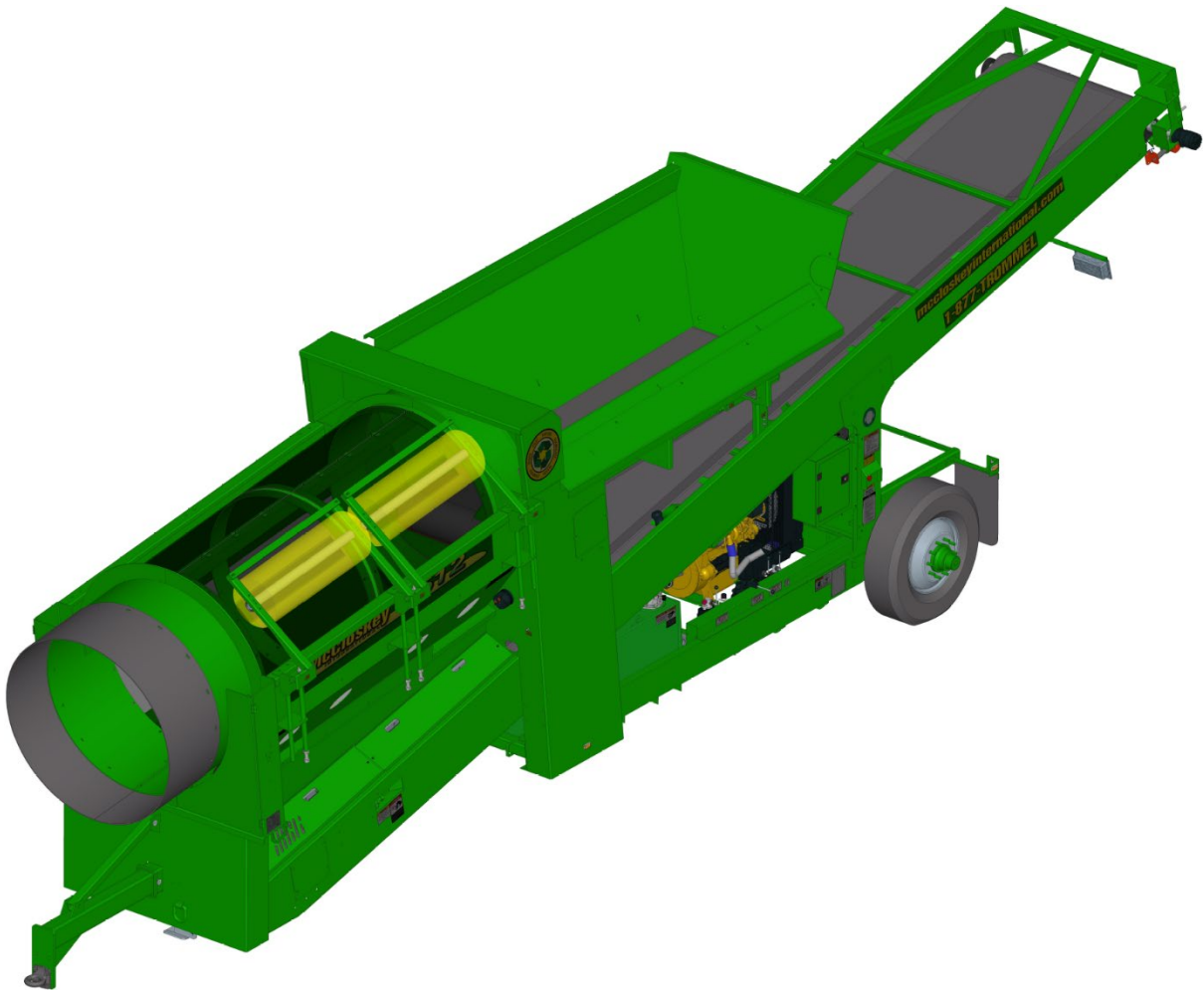
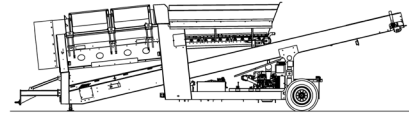


## SPECIFICATIONS

### 512A Trommel



Note: Optional equipment may be displayed



## DESCRIPTION

Heavy duty mobile trommel with following features:

- 5' x 12' heavy duty trommel drum
- 74 kW (100 hp) diesel engine
- Wheeled mobility
- 5<sup>th</sup> wheel connection (512A), pintle connection (512AP)
- Fast on-site setup time (10 minutes)

## SAFETY FEATURES

- External belt alignment points
- External grease points
- Full safety guarding for nip points

## DIMENSIONS AND WEIGHTS

### 512AP – Pintle connection:

#### **Working Dimensions**

Length.....	12.74 m (41' – 9½")
Width .....	2.59 m (8' – 6")
Height .....	3.52 m (11' – 6½")

#### **Transport Dimensions**

Length.....	12.85 m (42' – 2")
Width .....	2.59 m (8' – 6")
Transport Height.....	3.69 m (12' – 1")
Loading Height .....	3.00 m (9' – 10")

Weight (approximate)..... 9 750 Kgs (21 500 lbs.)

### 512A – 5<sup>th</sup> wheel connection:

#### **Working Dimensions**

Length.....	12.12 m (39' – 9")
Width .....	2.59 m (8' – 6")
Height .....	3.52 m (11' – 6½")

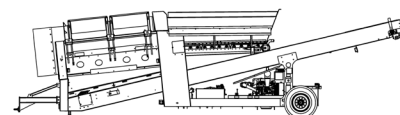
#### **Transport Dimensions**

Length.....	12.04 m (39' – 6")
Width .....	2.59 m (8' – 6")
Transport Height.....	4.12 m (13' – 6")
Loading Height .....	3.00 m (9' – 10")

Weight (approximate)..... 10 200 Kgs (22 500 lbs.)

## CAPACITIES

Hydraulic tank capacity .....	680 L (180 US gal)
Diesel tank capacity.....	295 L (78 US gal)
Hopper Capacity.....	3.4 m <sup>3</sup> (4.5 yd <sup>3</sup> )

**FEED CONVEYOR**

Belt width .....	750 mm (30")
Belt spec .....	Plain 500/3 5+1.5
Drive drum diameter .....	305 mm (12")
Tail drum diameter .....	254 mm (10")
Gearbox .....	Brevini CTD2051
Gearbox ratio .....	34,7:1
Motor .....	Sam Hydraulik BRZ250
Flow rate .....	65 lpm (18 US gpm)
Adjustable speed .....	Yes
Maximum speed .....	8 rpm

**FINES CONVEYOR**

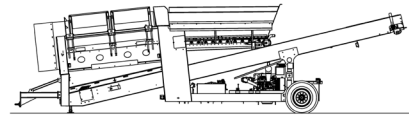
Belt width .....	1200 mm (48")
Belt spec .....	Plain 400/2 4+2
Drive drum diameter .....	254 mm (10")
Tail drum diameter .....	254 mm (10")
Motor .....	White RE32
Flow rate .....	85 lpm (22 US gpm)
Maximum speed .....	143 rpm

**TROMMEL (DRUM)**

Dimensions .....	1.52 m x 3.66 m (5' x 12')
Screening Area .....	11.8 m <sup>2</sup> (127 ft <sup>2</sup> )
Trommel angle .....	5 deg
Trommel motor .....	White DT19 (18.3 cc/rev)
Drive system .....	Direct drive with 18x7 rubber wheels
Hydraulic flow rate .....	125 lpm (33 US gpm)
Trommel speed .....	10 – 30 rpm
Adjustable speed .....	Yes
Longitudinal Trommel Supports .....	4 angle type lifters
Cleaning Brushes .....	Ground adjustable Ø16x 50" polyester brushes

**POWERUNIT AND HYDRAULICS**

Engine power .....	74 kW (100) hp diesel engine
Engine speed .....	2200 rpm
Flywheel pump 1 .....	P257 64, 42, 35
Total system flow .....	276 lpm (73 US gpm)
Hydraulic tank ratio .....	2.5 : 1
Hydraulic oil cooler .....	Yes



**ELECTRICS**

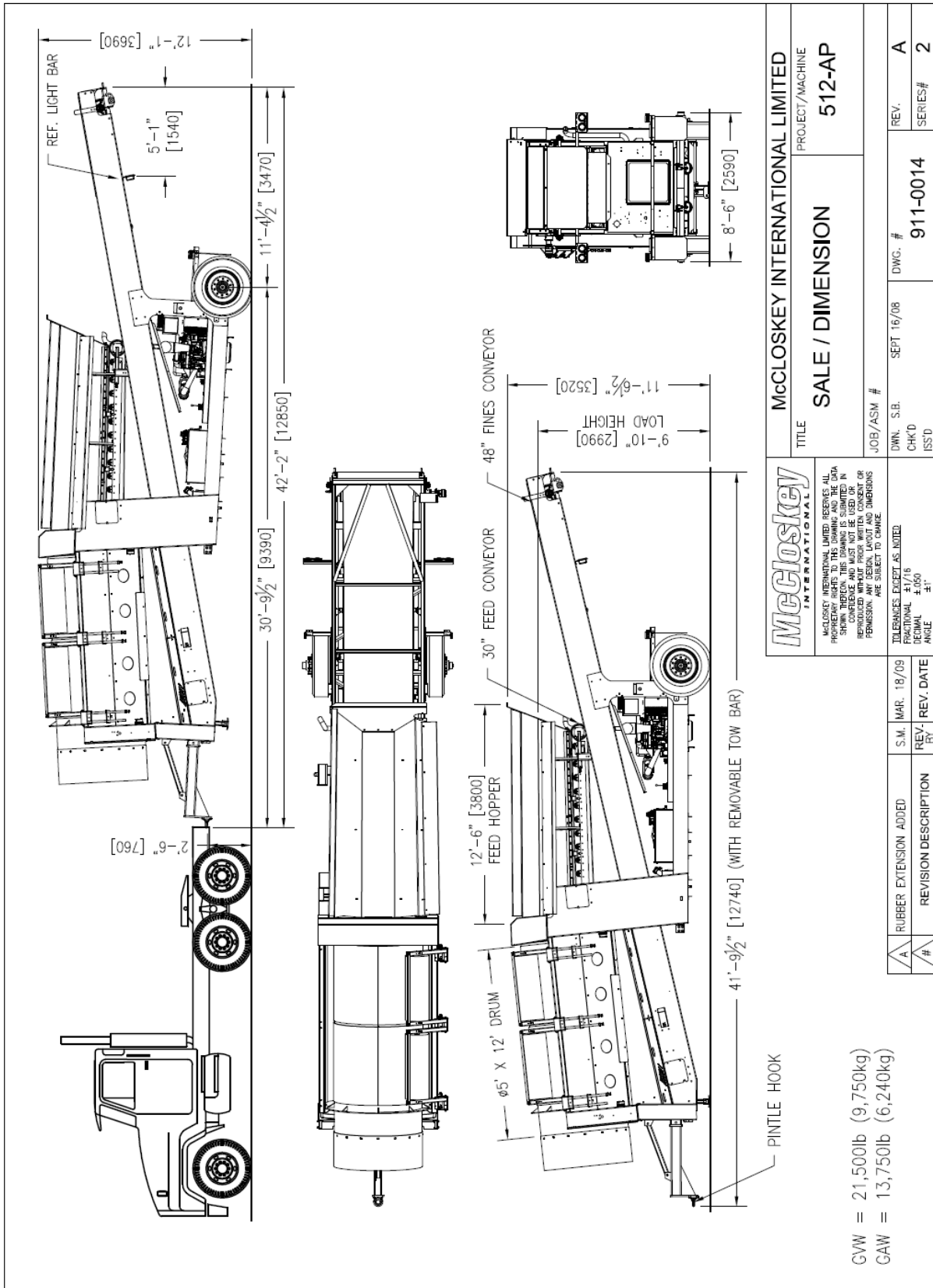
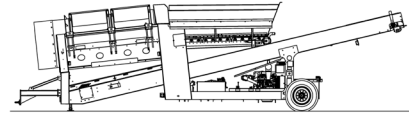
- Emergency stops ..... 2 off, 2 power unit RH&LH
- Chassis cabling ..... Armored cable
- Start Siren..... Yes – 10 sec delay
- Engine shutdowns:
  - Low oil pressure
  - High water temperature
  - Air filter blockage (selectable)
  - Fuel contamination
  - Low hydraulic tank level

**WHEELS**

- Axle..... Single Axle
- Wheels..... Single wheel 315/80R22.5 (2 tires)
- Spring suspension ..... No
- Brakes ..... Yes
- Mudguards..... Yes
- ABS ..... Option

**OPTIONS**

- Hydraulic Tipping Grid
- Double Brushes
- Auto Reversing Fan
- Auxiliary Hydraulic Circuit
- Punch Plate Screens
- Remote Feeder on/off
- Spare Drum
- King pin / 5<sup>th</sup> Wheel Hitch



		<b>McCloskey INTERNATIONAL LIMITED</b> PROJECT/MACHINE <b>512-AP</b>	
TITLE <b>SALE / DIMENSION</b>		JOB/ASM # DWN. S.B. SEPT 16/08 CHK'D 9111-0014 ISS'D	
McCloskey INTERNATIONAL LIMITED RESERVES ALL PROPRIETARY RIGHTS TO THIS DRAWING AND THE DATA SHOWN THEREON. THIS DRAWING IS TO BE USED ONLY FOR THE PROJECT AND SITE SPECIFICALLY IDENTIFIED HEREIN. ANY REPRODUCTION OR REUSE OF THIS DRAWING WITHOUT THE WRITTEN CONSENT OF McCloskey INTERNATIONAL LIMITED IS STRICTLY PROHIBITED. ANY DESIGN, LAYOUT AND DIMENSIONS ARE SUBJECT TO CHANGE.		TOLERANCES EXCEPT AS NOTED: FRACTIONAL ±1/16 DECIMAL ±.005 ANGLE ±1°	
RUBBER EXTENSION ADDED REVISION DESCRIPTION #	S.M. MAR. 18/09 REV. BY	DWG. # 9111-0014	REV. # A SERIES # 2

